

# SYNAPSE<sup>®</sup>

## 3D

### THE RIGHT APPROACH TO QUICK & EASY SURGERY PLANNING



#### Dr. Sanket S. Mehta

Director, SSO Hospital and Research Centre,  
Hepato-pancreatic-biliary surgery,IOUS guided liver surgery  
Cytoreductive surgery (CRS) & Hyperthermic  
Intra-peritoneal chemotherapy (HIPEC),  
Laparoscopic & Robotic GI & Gynaec- Oncosurgery

Hall no : D  
Date : 2<sup>nd</sup> November 2023 | Time : 12:15 - 12:45  
Venue : Jio World Convention Centre, Mumbai



## ADVANCED SURGICAL SIMULATION IN SYNAPSE 3D

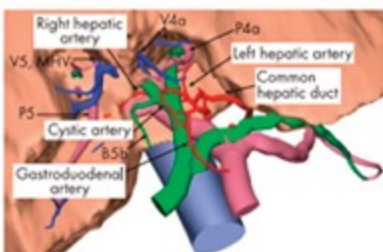
3D simultaneous visualization of the whole images can be performed by adding bile ducts to the MRCP. We could accurately understand the relationship among the tumor, the bile ducts, the portal veins, and the hepatic arteries.

FUJIFILM CASE REPORT

◆ Fig. 3

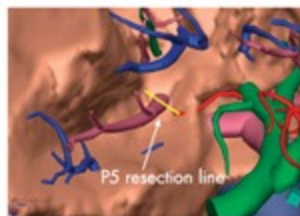


3D MRCP fusion image: By adding the bile ducts (green), the dimensional position of the tumor (dark pink), the hepatic arteries (red), and the portal veins (light pink) can be anatomically clarified.

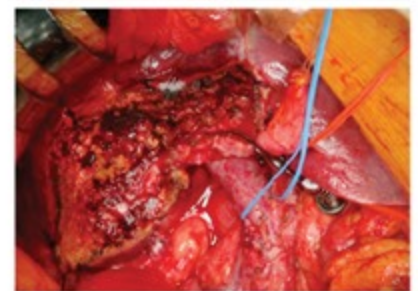
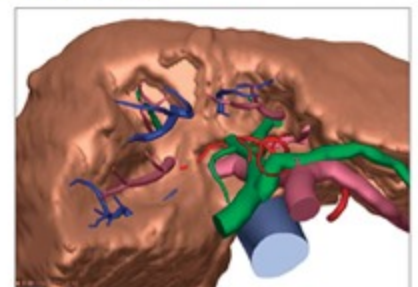


Virtual hepatectomy image: With the addition of the bile ducts, the dimensional position of the arteries, the bile ducts, and the portal veins at the hepatic hilus can be confirmed. With the simulation of the S4a55 subsegmentectomy, the vascular systems can clearly appear on the cut plane image.

◆ Fig. 5 : Comparison between intraoperative photos and 3D preoperative simulation images



(c) P5 appeared on the transection plane as a simulated image.



(d) Configuration of the transection plane of the liver is the same as that of the simulated cut plane image.